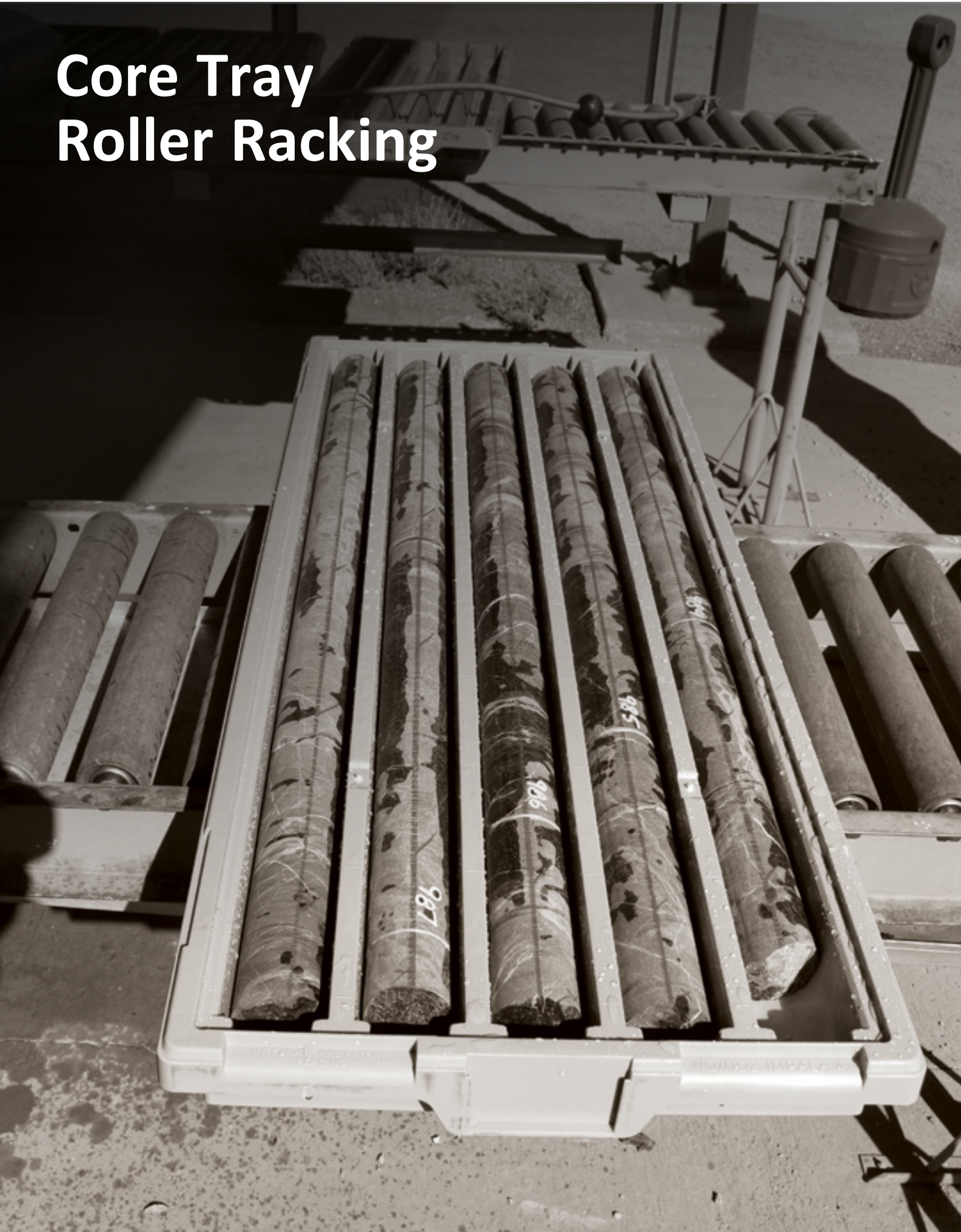
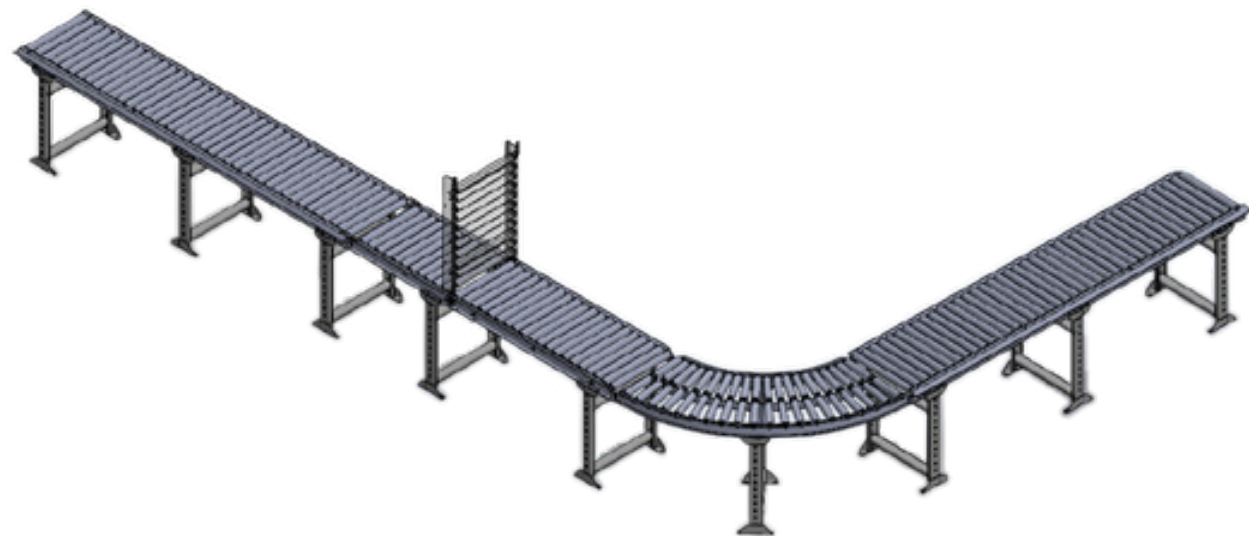


Core Tray Roller Racking



Core Tray Roller Racking - Welded SWL Rated



Roller Conveyor Frame

Your choice of roller conveyor will depend on the nature of the articles to be moved. Generally, goods that are heavy or less uniform in shape, or both, will require roller conveyors. Although each part of a gravity section has separate load capacities, it is important to note that the overall capacity of the section is dependent upon the combination of roller pitch, roller type and the method of support.

Available in both straight and curved sections, the side channel is made from thick material, folded into a 'C' section for strength. The cross members are made of inverted angle iron, strategically welded into position to reinforce the section and provide a bed for the rigid support.

There are standard lengths for straight sections (1500mm and 3000mm) and curves (45° and 90°). 'Oval' axle holes to suit our standard gravity rollers are punched for flexibility of roller pitch. Sections interlock to form a positive and secure join between frames, allowing the flexibility to add or reduce sections as required.

Straight sections incorporate a bar coupler at one end and a hook coupler at the other. Curved sections have universal couplers at both ends. Manufacture allows the flexibility to provide non-standard lengths or widths upon request.

Westernex offers the option for customers to submit drafts or estimations of their own custom layout suited to their needs from which we can supply a quote.

Conveyor Straight Frame

Rollers sold separately.

SKU	SIZE (L x W)
1504-00009-1500	1500mm x 450mm
1504-00009-3000	3000mm x 450mm
1504-00001-1500	1500mm x 600mm
1504-00001-3000	3000mm x 600mm

SWL Rated and Certified

Ori-V Guide

SKU	SIZE
1504-00132-1500	1500mm
1504-00132-3000	3000mm



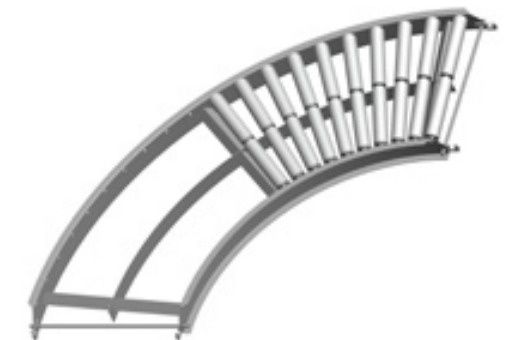
Core Tray Roller Racking - Welded SWL Rated

Conveyor Curved Frame

Rollers sold separately.

SKU	TYPE	SIZE (L x W)
1504-00103	45°	999.3mm x 450mm
1504-00013	90°	1372mm x 450mm
1504-00033	45°	999.3mm x 600mm
1504-00006	90°	1372mm x 600mm

SWL Rated and Certified

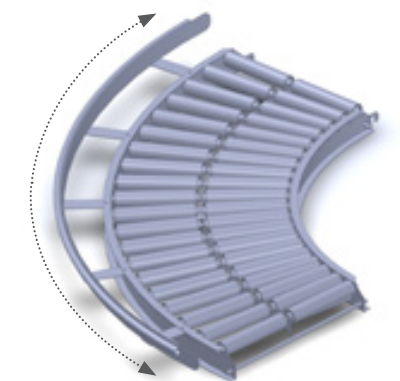


Conveyor Frame Corner Guard

Does not include curve frame.

SKU	TYPE	SUITABLE FRAME WIDTH
1504-00037	90°	450mm
1504-00049	90°	600mm

SWL Rated and Certified



Conveyor Modified Gate

Rollers sold separately.

SKU	SIZE (W x L)
1504-00017-1200	450mm x 1200mm
1504-00017-900	450mm x 900mm
1504-00028-1200	600mm x 1200mm
1504-00028-900	600mm x 900mm

SWL Rated and Certified



Conveyor Frame Hinged End Stops

SKU	SUITABLE FRAME WIDTH
1504-00205	450mm
1504-00109	600mm



Core Tray Roller Racking - Welded SWL Rated

Conveyor Rollers Galvanised Steel

110kg capacity. These rollers are made from Electric Resistance Welding (ERW) galvanised steel tube, providing a strong and durable roller. The bearing is all steel construction incorporating a hardened steel, caged ball bearing, shielded and greased.



	SKU	DESCRIPTION	SUITABLE FRAME WIDTH
A	1504-00015	Straight Frame	450mm
B	1504-00016	Curved Frame	450mm
A	1504-00007	Straight Frame	600mm
B	1504-00008	Curved Frame	600mm

Conveyor Rollers Polypropylene

50kg capacity. These rollers are made from polypropylene tube, UV-stabilised but suitable for indoor use only. The bearing inner and outer is manufactured from acetal with a single row of carbon steel balls.

These lightweight, quiet running rollers are used to reduce possible damage and are suitable where corrosive elements may affect efficiency or hygiene standards. They are not suitable for extreme corrosive conditions, where non-standard bearings and shaft material would be required.



	SKU	DESCRIPTION	SUITABLE FRAME WIDTH
C	1504-00019	Straight Frame	450mm
D	1504-00020	Curved Frame	450mm
C	1504-00023	Straight Frame	600mm
D	1504-00024	Curved Frame	600mm

Roller Quantity Table 110kg Capacity

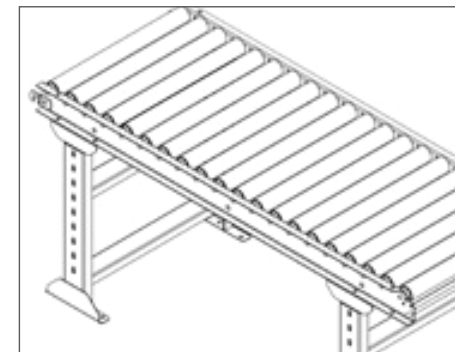
Straight Frame

ROLLER PITCH	ROLLERS PER FRAME	
	3000mm	1500mm
75	40	20
112	27	13
150	20	10

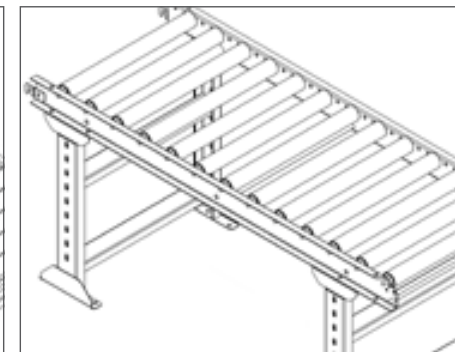
Curved Frame

ROLLER PITCH	ROLLERS PER FRAME	
	45°	90°
75	10	20
150	5	10

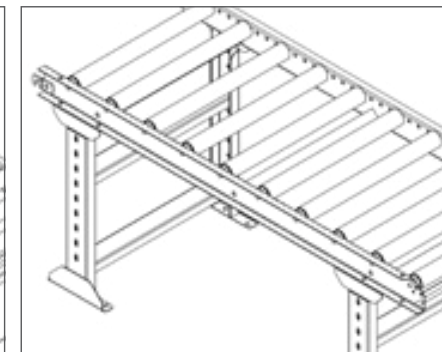
75 Pitch



112 Pitch



150 Pitch



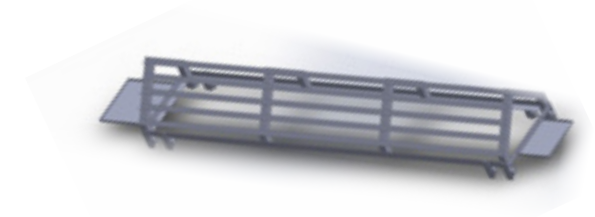
Email supply@westernex.com.au if you have any enquiries regarding roller racking options.

Core Tray Roller Racking - Welded SWL Rated

Ori-Rack Roller Frame

SKU	SIZE
1504-00051	600mm x 3000mm

We can customise these racks to your requirements.



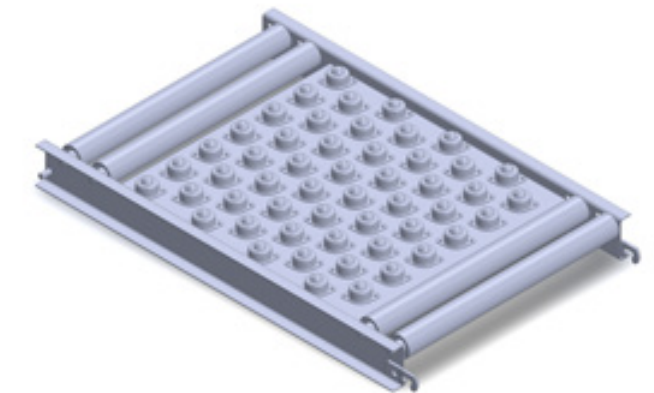
Please provide the frame measurements at the time of the quote request.

Conveyor Ball Transfer Table

These simple, but very adaptable free-rolling units provide the capability to easily re-direct trays in any direction with minimum effort. Operators can move any flat object in any direction on a horizontal plane. They are especially suited for transferring goods from one conveyor line to another. Best suited for non-dusty environments. Rollers are sold separately.

SKU	SIZE (W x L)
1504-00018	450mm x 1000mm
1504-00105	600mm x 1000mm

*Please note that the Impala 3 and 4 trays do not require these.



Conveyor Rigid Support RHS

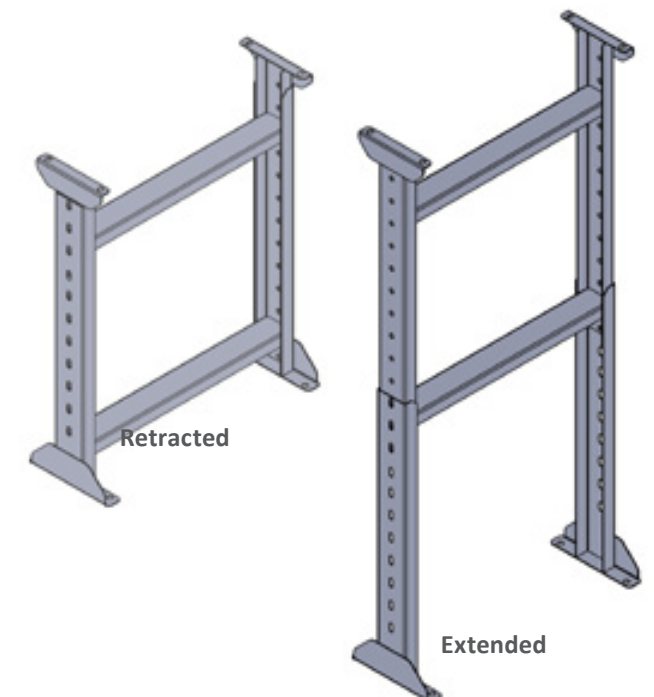
Rigid supports provide a firm foundation for all the roller and wheel conveyor sections in the range.

Made from rectangular hollow steel (RHS) and fully welded for strength and reliability, each stand can be individually adjusted to the height required. A range of models is available to suit various frame widths, providing the choice of operating heights from 610mm to 1320mm.

While supports have the flexibility to be used as free-standing units, it is recommended that they are bolted into position to ensure operator safety.

SKU	SIZE (W x H)
1504-00126	450mmW x 610-1016mmH
1504-00127	450mmW x 760-1320mmH
1504-00041	600mmW 610-1016mmH
1504-00125	600mmW 760-1320mmH

SWL Rated and Certified



Core Tray Roller Racking

Pictured below is a core tray roller racking system belonging to one of our customers. As mentioned previously, Westernex offers the option for customers to submit drafts or estimations of their own custom layout suited to their needs from which we can supply a quote.



Core Tray Roller Racking -Bolt Together



Your choice of roller conveyor will depend on the nature of the articles to be moved. Generally, goods that are heavy or less uniform in shape, or both, will require roller conveyors. Although each part of a gravity section has separate load capacities, it is essential to note that the overall capacity of the section is dependent upon the combination of roller pitch, roller type, and the method of support.

Holes to suit our standard gravity rollers are punched for the flexibility of the roller pitch. Sections interlock to form a positive and secure join between frames, allowing the flexibility to add or reduce sections as required. Straight sections incorporate a bar coupler at one end and a hook coupler at the other. Curved sections have universal couplers at both ends.

Available in both straight and curved sections, the side channel is made from thick material. The cross members are made of inverted angle iron, strategically bolted into position to reinforce the section and provide a bed for the rigid support.

The manufacturer allows the flexibility to provide non-standard lengths or widths upon request. Roller Conveyor Frame Westernex offers the option for customers to submit drafts or estimations of their own custom layouts suited to their needs from which we can supply a quote.

Conveyor Straight Frame

Rollers are sold separately.

SKU	SIZE (W x L)
1504-96001-1500	600mm x 1500mm
1504-96001-3000	600mm x 3000mm



Conveyor Galvanised Steel Rollers, Quantity Table (Straight Frame)

SKU	ROLLER PITCH	ROLLERS PER FRAME, 3000mm
1504-96007	75	40
	112	27
	150	20



75 Pitch



112 Pitch



150 Pitch



Core Tray Roller Racking -Bolt Together

Conveyor Curved Frame

Does not include the Frame Corner Guard.

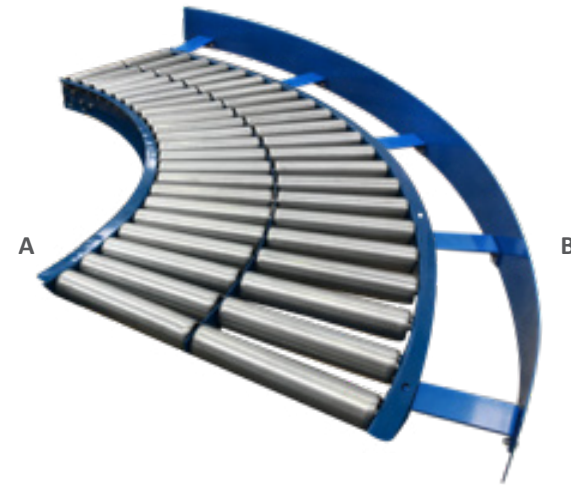
SKU	TYPE	SIZE
1504-96002-90	90°	600mm x 90deg

Comes with rollers populated with 75 pitch.

Conveyor Frame Corner Guard

Does not include curve frame.

SKU	SIZE
1504-96003-90	600mm x 90deg



Conveyor Modified Gate

SKU	SIZE (W x L)
1504-96005-1200	600mm x 1200mm

Comes with rollers populated with 75 pitch.



Conveyor Rigid Support RHS

SKU	SIZE (W x H)
1504-96006	600mm X



Conveyor Frame Hinged End Stops

SKU	SUITABLE FRAME WIDTH
1504-96004	600mm

V-Guide Straight Frame

SKU	SIZE (W x L)
1504-90001-1500	600mm x 1500mm
1504-90001-3000	600mm x 3000mm



Core Tray Roller Racking

Heavy Duty Steel Wheel Curved Expandable Trolley

A great addition to our roller racking family, this trolley will ensure easy manoeuvring of core trays to save your teams back when moving core around the core farm.

Equipped with:

- 4 x 5inch wheels that are lockable (Rated 150kg each).
- Weight load rating limit of max. 200kg/m.
- It's the perfect solution to transport core.
- The load rating for this roller trolley conveyor is maximum 200kg/m.
- Height adjustable legs.
- Comes with 4 x 5inch Wheels that are lockable (Rated 150kg each)
- Each conveyor comes with a removable End Stops on both sides and connection hooks to attach additional conveyors for extra length.

Specification

- Capacity: 150kg p/meter
- Compact length: 1500mm
- Extended length: 4000mm
- Width: 610mm
- Adjustable Height: 700mm - 1000mm

SKU
1504-96019-600





Perth Main Warehouse

66 Truganina Rd, Malaga,
Western Australia 6090
+61 (0) 8 9209 8500
perth@westernex.com.au

Kalgoorlie Warehouse

18 Kinclaven Way, Broadwood,
Kalgoorlie, Western Australia 6430
+61 (0) 8 9091 1152
kalgoorlie@westernex.com.au

Brisbane Warehouse

14 Hasp St, Seventeen Mile Rocks,
Queensland 4073
+61 (0) 7 3376 2422
brisbane@westernex.com.au

Mt Isa Warehouse

13 Ryan Rd, (Entry off Davis Rd)
Mt Isa, Queensland 4825
+61 (0)7 4743 2122
mtisa@westernex.com.au

Orange Warehouse

72 Astill Drive, Orange,
NSW, 2800
+61 (0) 7 3376 2422
brisbane@westernex.com.au

