

# Office Supplies



## Clipboards

### Saunders Aluminium Clipboard A4 Top Opening Sheet Holder

Sheet Holder Clipboards have been around for a long time in one form or another. These sheet holders have a modern twist to better suit the handling of modern forms. Light and strong, the top folds clear back and around underneath - out of the way, making it easy to handle.

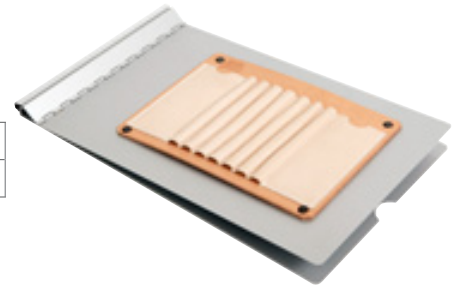
SKU
1166-13031



### Saunders Aluminium Clipboard A4 With Leather Attachment

Leather attachment riveted on, to store pencils and rulers. Open cover rests at a 140° angle to restrict visibility of confidential documents. Provides solid smooth writing surface. Spring-clamp mechanism securely holds 3/8" of paper. Accommodates vertical or horizontal forms. Designed for right- or left- handed use. HIPAA Product Solution.

SKU
1166-00007



### Saunders Aluminium A-Form Holder

The A-Holder is a versatile, efficient and easy-to-use storage clipboard form holder! It can be used by both right and left-handed people and will accommodate forms ruled in either portrait or landscape design. The writing plate folds under your desired number of copies to provide a hard smooth writing surface. The storage compartment below keeps your paperwork dry and protected.

SKU
1166-10017



### Saunders Aluminium Clipboard A5 Side Opening Snapack

Made to accommodate memo size paper, the Saunders Snapak features a side opening design with a 9.5mm (3/8") storage compartment and clipboard to keep your paperwork organised. The clipboard incorporates a high tension serrated clip that holds up to 12mm (1/2") of paper securely.

SKU
1166-10507



### Saunders Aluminium Clipboard A5 Springback Sheet Holder

This clipboard is made from aluminium and has a strong clamp to hold sheets firmly in place. The Springback will hold one sheet or one hundred sheets securely. The clamp locks in the open position for easy loading. Westernex is a Saunders distributor and can order in any Saunders clipboard from the US upon customer's request. Made from durable recycled aluminum with at least 30% post-consumer waste.

SKU
1166-16505



## Clipboards

### Saunders Aluminium Clipboard Letter A4 Top Opening

Perfect for any law enforcement officer, parole office, social worker, delivery driver, demolition supervisor, etc, looking for a durable and mobile work space.

Features a section for smaller supplies in the lower compartment. Top open design, and self-locking latch keeps compartments securely fastened.

SKU
1166-21017



### Saunders Aluminium Clipboard Legal A4 Top Opening

Perfect for any law enforcement officer, parole office, social worker, delivery driver, demolition supervisor, etc, looking for a durable and mobile work space.

Dual storage compartments total 38.1mm (1.5") capacity, includes tray for smaller supplies. Top open design, with a self-locking latch to keep compartments securely fastened. Westernex is a Saunders distributor and can order in any Saunders clipboard from the US upon customer's request. Made from durable recycled aluminum with at least 30% post-consumer waste

SKU
1166-21018



### Clipboard with Cover A4

Ideal for the home, school or office. Made for durability, this clip folder is fitted with wire clips.

SKU
1603-00354



### Storage Clipboard A4

Clipboard top opens to store loose papers, brochures and documents. Durable hard plastic ensures a sturdy writing area. Wire clip keeps documents secure.

SKU	COLOUR	SIZE
1603-00051	Black	255W x 40D x 400H mm



### Clipboard Masonite A3

Durable masonite clipboard suitable for documents in A3 size.

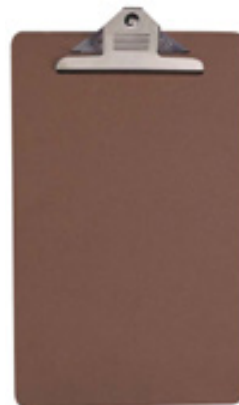
SKU
1603-00355



### Clipboard Masonite A4

Masonite clipboards are made from durable masonite and feature quality metal clips. A4 with solid clip.

SKU
1603-00194



## Document Filing

### Plain Face Envelopes

Each envelope has a side loading feature which makes it ideal for folded letters, cheques and more. This envelope has adhesive on the flap which makes it easy to press and seal.

SKU	SIZE	UOM
1603-00363	135 x 80mm	Box of 500



### Aerial Photo Wallet

- Thick card stock for filing documents of any type
- Expandable to approximately 1in width

SKU	UOM
APW	Each



### Manila Folder A4

Assorted colours. Made from durable quality manila board. Ideal for all projects and personal files.

SKU	UOM
1603-00365	Box of 100



### Plastic Envelope

250 x 120mm. Comes in packs of 10.

SKU
1603-00362



### Dymo Rhino Metal Embosser

- Create 12mm stainless steel and aluminium labels.
- Create hanging, screw-on or nail-on labels with built-in hole and cable-tie punches.
- Accurately set the length of leading and trailing label edge with a built-in measuring gauge.
- Print mirror script labels with included reverse-image character wheel.
- Cut square or rounded edges effortlessly with an easy-to-use cutting handle.

SKU
1603-00090



### Lever Arch File A4

Keep all your documents and paperwork organised and in place with this lever arch file and sheet protectors.

SKU	DESCRIPTION	UOM
1603-00364	A4 Lever Arch File	Each
1603-00366	A4 Sheet Protectors	Box of 100



### Dymo Aluminium Tape

SKU	DESCRIPTION	SIZE
1603-00360	With Adhesive	12mm x 3m
1603-00361	Without Adhesive	12mm x 4.8m

## Drafting

### Vertical Plan Cabinet

A vertical plan cabinet suited to paper sizes A1 to AO. Vertical plan cabinets are used to store single sheet tracings and paper plans. Planex also supplies adhesive strips to hang plans. Available to suit 3 paper sizes.



SKU
1604-01000

### Rodia Suspension Strips

- Suspension strips to suit planex or vertiplan storage cabinets.
- Available in continuous rolls.
- Self adhesive edge attaches to drawings.
- Standard (311) or heavyweight (811) options available
- Standard (311) strips are suitable for most light plans.
- Heavyweight (811) strips are preferable for old plans, or heavy documents (e.g. mounted maps, paste board, posters or laminates).

SKU	DESCRIPTION	UOM
1604-01006	Standard (311)	100m Roll
1604-01007	Heavyweight (811)	100m Roll



### Tamaya Planix 7 Digital Planimeter

The Tamaya Planix 7 Digital Planimeter is a versatile measuring tool for finding the area of regular and irregular shapes on 2-dimensional maps, plans, and drawings. It measures elongated shapes, lines and circular areas, removing the need for grids, charts, or calculators. The measuring accuracy is better than +/-0.2 percent, so its results are precise and reliable. It features a numeric keypad and all results are instantly displayed on the clear LCD screen while you measure. This is the perfect tool for architects, medical professionals, surveyors, designers, forestry, engineers, and anyone that measures objects on maps, plans, or drawings.

#### Features

- Display capacity: 8 digits output/input HOLD, MEMO, BATTE, READY, cm<sup>2</sup>, in<sup>2</sup>, SCALE, m<sup>2</sup>, km<sup>2</sup>, ft<sup>2</sup>, acre
- Display Method: LCD with zero suppression
- Measuring range: 3000 × 300mm
- Resolution: One digit corresponds to 0.1cm<sup>2</sup> or 0.01in<sup>2</sup>
- Accuracy: Better than ±0.2% (±2/1000 pulses)
- Power: Internal NiCd or AC Adaptor
- Operating hours: After 15 hours recharge: 30 hours
- Dimensions: 150 × 240 × 39mm (main body) 183 × 260 × 64mm (case)
- Weight: Approximately 650g

#### What's in the box

- Tamaya Planix 7 Digital Planimeter 365170
- Carrying case
- NiCad rechargeable battery
- AC adapter/charger

SKU
1604-01008



## Drafting

### Plotter Paper

Wide format plotter paper roll.

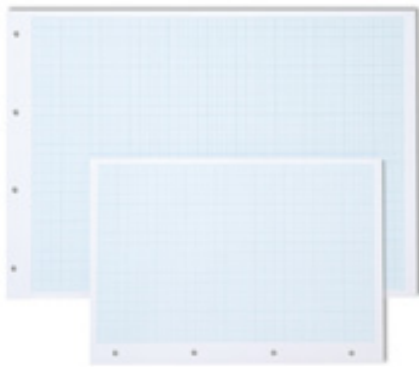
SKU	SIZE	UOM
1604-00002	841mm x 50m	Roll



### Graph Pad

Printed on quality bond paper. The grids are clear and printed in green so that the grid can be easily eliminated from pages that need to be photocopied.

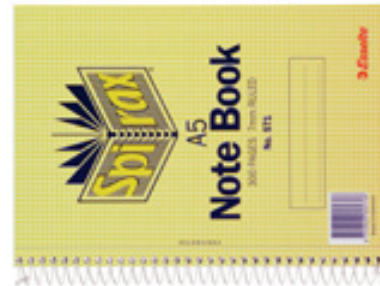
SKU	DESCRIPTION	UOM
1603-00368	A4, 1mm graph	25 Sheets
1603-00369	A4, 5mm graph	25 Sheets
1603-00367	A3, 1mm graph	25 Sheets



### Spiral Notebooks

A variety of ruled paper spiral notebooks of different sizes.

SKU	DESCRIPTION	SIZE
1603-00108	Side Opening	A4, 120 pages
1603-00330	Side Opening	A5, 300 pages
1603-00376	Top Opening	A7, 96 pages



### Tracing Paper Pad A3 90gsm

Low opacity paper in pad form for convenience. Allows easy replication of imagery and drawings.

SKU	UOM
1603-00048	Pack of 10



### Rite in the Rain Paper Copier Waterproof Paper

Copy or laser print your own all-weather forms, charts, maps, and worksheets on patented Rite in the Rain All Weather Copier Paper.

SKU	SIZE	UOM
1130-50172	A4	200 Sheets
1130-50173	A3	200 Sheets



## General Stationery

### A3 Laminator

- Ideal for the mid-sized office
- Very fast warm up time of 60 seconds
- Fast through put speed of 800mm/min for the 3100L
- Tap touch button user controls
- Accepts 75 - 175 micron pouches
- Auto detect for misfed documents with a manual release
- Auto shut off after 30 minutes with audible alert
- Sureflow anti-jam technology

SKU	DESCRIPTION	UOM
1604-06002	A3 Laminator	Each
1604-06004	A4 Laminating Sheets	Pack of 100
1604-06003	A3 Laminating Sheets	Pack of 100



### HP Scientific Calculator 35s

Get professional performance from HP's ultimate RPN scientific programmable calculator—ideal for engineers, surveyors, college students, scientists and medical professionals. Scientific projects require accuracy, functionality and dependability for success. The HP 35s scientific programmable calculator delivers them—and more—with features that include 30KB user memory, your choice of RPN and algebraic entry-system logic, a convenient two-line display, and the time-saving HP Solve application.

SKU
1603-00370



### Handheld Calculator 8-digit

- Extra slim design fits neatly into your hand and discretely slides away in a briefcase when not in use.
- Solar powered with the added security of battery back up for low light conditions.
- Features include 3 key full memory function, percentage and square root keys.
- Extra large 8 digit display for easy viewing
- Soft rubberised keys for comfortable use - no more sticky keys.
- 65mm (w) x 115mm (d) x 6mm (h)

SKU
1603-00187



### Stapler

Full strip capacity. Capacity of 20 sheets of 80gsm.

SKU	DESCRIPTION	UOM
1603-00373	Full Strip Stapler	Each
1603-00374	Staples	Box of 5000



### Post-It Notes

Sticky notes for organisational purposes and a variety of other tasks at home and in the office.

SKU	SIZE	UOM
1603-00375	36 x 48 mm	Pack of 12



## General Stationery

### Correction Tape

- Soft grip - thumb press application
- Strong quality tear-proof tape
- Tape guide to ensure consistency
- 5mm x 8m

SKU
1603-00371



### Staple Remover

Features a staple retainer to prevent staples flicking off during removal

SKU
1603-00344



### Stainless Steel Scissors

165mm. Stainless steel.

SKU	SIZE
1603-00372	165mm



### Ruler Stainless Steel Metric

Premium quality stainless steel. Easy read numerals. Heavy duty acid etched blade.

SKU	SIZE
1141-00100-300	300mm
1141-00100-1000	1000mm



### Clear Protractor 180°

Made from plastic and features bevelled edges.

SKU	SIZE
1603-00079	10cm
1603-00080	15cm



### Bulldog Clips

These clips provide an extra strong grip on your paperwork and keep them organised.

SKU	SIZE	UOM
1603-00152	25mm	Box of 12
1603-00088	50mm	Box of 12





## Miscellaneous

### Blow Off Air Duster

Removes dust from electronics, machinery and instruments.

SKU	SIZE
1603-00217	285g



### Tag ID

Plastic tags with key ring and slot for insert.

SKU	DESCRIPTION	INSERT SIZE
1603-00379	Oblong	63 x 45mm
1603-00378	Square	34 x 34mm



### Rubber Bands

Quality, rubber bands for your office or factory needs.

SKU	UOM
1603-00377	500g Packet



## Office Storage

### Locker

- Available in 305mm wide and 380mm wide units
- Flush mounted doors with 180 degree opening capability
- Hanging rail included in 1 and 2 door lockers
- Card holder provision on each locker door for easy identification
- All locker doors fitted with ventilation holes
- Key lock and padlatch as standard
- Digital locking system is an optional extra
- Quality powder coated finish

SKU	PRODUCT	COLOUR	SIZE in MM
1707-00109	1 Door Locker	Grey	1830H x 305W x 460D
1707-00110	2 Door Locker	Grey	1830H x 305W x 460D
1707-00111	3 Door Locker	Grey	1830H x 305W x 460D
1707-00108	4 Door Locker	Grey	1830H x 305W x 460D
1707-00112	6 Door Locker	Grey	1830H x 305W x 460D



### Stallion Boltless Shelving - 5 Shelves

- 1800Hx1200Wx400Dmm
- Weight: 33.5kg
- Solid steel frame with melamine shelf inserts ensure the systems strength and durability
- The tear drop connectors allow for easy assembly without the need for nuts and bolts
- The stepped beam offers a flush shelf level allowing for easy access
- Shelf carrying capacity of 250kg (UDL)

SKU	COLOUR	DESCRIPTION
1707-00125	Grey	Base Unit
1707-00125-A	Grey	Spare Shelf

## Office Storage

### Storage Cabinet with Shelves

- The barrel exchange locking system is fitted and comes with anti-bacterial keys
- Shelves are adjustable in 32mm increments
- 40kg UDL shelf capacity
- 3 point locking mechanism with key lock
- Flush mounted doors with an 180 degree door opening capacity
- Quality powder coated finish

SKU	PRODUCT	COLOUR	SIZE in MM
1707-00113	2 Shelves Cabinet	Grey	1015H x 914W x 463D
1707-00114	3 Shelves Cabinet	Grey	1830H x 914W x 463D
1707-00115	4 Shelves Cabinet	Grey	2000H x 914W x 463D



### Storage Cabinet Spare Shelf

Spare shelf for storage cabinet unit.

SKU	COLOUR	SIZE
1707-00113-A	Grey	910W x 463Dmm



Other colour variants available upon request for all of the storages listed here.

### Storage Cabinet Shelf Clip

Requires 5 clips per shelf.



SKU
1707-00136

## Office Storage

### Steel Sliding Glass Cabinet - 3 Shelves

The smooth sliding door system allows for effortless access. Perfect for narrow or confined areas as no additional space is needed to access the cabinet. Available in either a steel sliding door to ensure security of important goods or glass sliding doors for easy visual identification and stock control.

- 1830Hx1500Wx465Dmm
- Weight: 95kg

SKU	COLOUR
1707-00132	Grey



### Steel Sliding Glass Cabinet Spare Clip

- Spare clip for Steel Sliding Glass Cabinet units
- Requires 5 clips per shelf
- Weight: 0.1kg



SKU
1707-00135

### Uni Shelving Spare Clip

- Spare clip for Uni Shelving units
- Requires 4 clips per shelf level
- Weight: 0.1kg



SKU
1707-00128

### Uni Shelving - 7 Shelves

- 2175H x 900W x 400Dmm
- Base unit weight: 70kg
- Extension weight: 67.5kg
- Spare shelf weight: 2kg
- Shelves are adjustable in 25mm increments
- 100kg Shelf carrying capacity (UDL)
- Quality Colorbond BlueScope steel

SKU	COLOUR	DESCRIPTION
1707-00126-BASE	Grey	Base Unit
1707-00126-EXT	Grey	Extension
1707-00126-A	Grey	Spare Shelf



### Uni Shelving - 7 Shelves

- 2175H x 1200W x 400Dmm
- Base unit weight: 78kg
- Extension weight: 75.5kg
- Spare shelf weight: 2.6kg
- Shelves are adjustable in 25mm increments
- 100kg Shelf carrying capacity (UDL)
- Quality Colorbond BlueScope steel

SKU	COLOUR	DESCRIPTION
1707-00127-BASE	Grey	Base Unit
1707-00127-EXT	Grey	Extension
1707-00127-A	Grey	Spare Shelf



## Office Storage

### Steel Sliding Glass Cabinet - 2 Shelves

- 1015Hx914Wx465Dmm
- Weight: 42kg
- The smooth sliding door system allows for effortless access and is perfect for narrow or confined areas as no additional space is needed to access the cabinet. Available in either a steel sliding door to ensure security of important goods or glass sliding doors for easy visual identification and stock control.

SKU	COLOUR
1707-00129	Grey



### Steel Sliding Glass Cabinet - 2 Shelves

- 1015Hx1500Wx465Dmm
- Weight: 70kg
- The smooth sliding door system allows for effortless access and is perfect for narrow or confined areas as no additional space is needed to access the cabinet. Available in either a steel sliding door to ensure security of important goods or glass sliding doors for easy visual identification and stock control.

SKU	COLOUR
1707-00130	Grey



Other colour variants available upon request for all of the storages listed here.

### Steel Sliding Glass Cabinet - 3 Shelves

- 1830Hx914Wx465Dmm
- Weight: 63kg
- The smooth sliding door system allows for effortless access and is perfect for narrow or confined areas as no additional space is needed to access the cabinet. Available in either a steel sliding door to ensure security of important goods or glass sliding doors for easy visual identification and stock control.

SKU	COLOUR
1707-00131	Grey



### Steel Sliding Glass Cabinet Spare Shelf

Spare shelf for Sliding Glass Cabinet units.

SKU	COLOUR	SIZE
1707-00133	Grey	914W x 465Dmm
1707-00134	Grey	1500W x 465Dmm



## Visual Communication

### Whiteboard Aluminium Frame

- Resists ghosting over time
- The commercial grade surface erases cleanly
- Will remain pristine with only occasional maintenance
- Magnetic feature provides extra functionality
- Hang papers on the whiteboard surface using magnets
- Best suited for moderate use in spaces with regular traffic
- Includes full length pen tray and wall mounting kit

Premium whiteboard that is perfect for shared work environments within offices and schools that require enhanced whiteboard performance.

SKU	SIZE (LxW)
1603-00004-900	900 x 600mm
1603-00004-1200	1200 x 900mm
1603-00004-1800	1800 x 900mm



### Bulletin Board Fabric

- Fabric surface provides maximum durability.
- Meets all your communication and collaboration requirements.
- High density backing for maximum pin holding power.
- Ensures documents stay securely posted.
- Stylish aluminium frame suits all office and school interiors.
- Ideal for pinning notices, reminders and photographs.
- Push pin and velcro compatible.
- Best suited for heavy use in spaces with regular traffic.
- Includes wall mounting kit.

Premium bulletin board that is perfect for shared work environments within offices and schools that require enhanced fabric board performance.

SKU	SIZE (LxW)
1603-00022-900	900 x 600mm
1603-00022-1200	1200 x 900mm



### Magnetic Strips

- Rewritable and reusable dry erase magnetic strips.
- Easily identify items by creating your own magnetic labels.
- Stick to any magnetic surface including magnetic whiteboards.
- Use a damp cloth to wipe magnetic strips clean

SKU	SIZE	UOM
1603-00380	25 x 30mm	Pack of 2



### Magnetic Whiteboard Eraser

SKU
1603-00268



### Whiteboard Cleaner 500mL

SKU
1603-00381



## Writing Instruments

### Pencil HB

Standard writing pencil grade for versatility of use.

SKU	UOM
1603-00386	Box of 12



### Mechanical Pencil

These mechanical pencils have rubber grips which make for greater comfort and control while writing.

SKU	DESCRIPTION	SIZE
1603-00387	Mechanical Pencil	0.7mm
1603-00385	Lead Refills	0.7mm



### Pencil Sharpener

A variety of pencil sharpeners with multiple options depending on application and preference.

SKU	DESCRIPTION
1603-00383	Barrel Pencil Sharpener 1 Hole
1603-00150	Metal Pencil Sharpener 1 Hole
1603-00109	Metal Pencil Sharpener 2 Hole



### Eraser

Comfort edge on eraser increase smartness when erasing. Extra clean erasing of graphite pencils; phthalate and latex-free.



SKU
1603-00384

# Writing Instruments

## Derwent Artist Pencils Box of 6

SKU	COLOUR
1603-10100	Zinc Yellow
1603-10200	Lemon Cadmium
1603-10300	Gold
1603-10400	Primrose Yellow
1603-10410	Champagne
1603-10500	Straw Yellow
1603-10510	Buttercup Yellow
1603-10600	Deep Cadmium
1603-10700	Naples Yellow
1603-10800	Middle Chrome
1603-10900	Deep Chrome
1603-11000	Orange Chrome
1603-11100	Spectrum Orange
1603-11200	Scarlet Lake
1603-11300	Pale Vermilion
1603-11400	Deep Vermilion
1603-11410	Bright Red
1603-11500	Geranium Lake
1603-11600	Flesh Pink
1603-11610	Light Sienna
1603-11620	Salmon
1603-11630	Ash Rose
1603-11700	Pink Madder Lake
1603-11800	Rose Pink
1603-11810	Rioja
1603-11900	Madder Carmine
1603-11910	Claret
1603-12000	Crimson Lake
1603-12100	Rose Madder Lake
1603-12110	Plum
1603-12120	Grape
1603-12200	Magenta
1603-12210	Heather
1603-12220	Soft Violet
1603-12300	Imperial Purple
1603-12400	Red Violet Lake
1603-12410	Slate Violet
1603-12500	Dark Violet
1603-12600	Light Violet

SKU	COLOUR
1603-12700	Blue Violet Lake
1603-12800	Delft Blue
1603-12810	Royal Blue
1603-12820	Mid Ultramarine
1603-12830	Teal Blue
1603-13300	Light Blue
1603-13400	Sky Blue
1603-13500	Prussian Blue
1603-13600	Indigo
1603-13610	Ash Blue
1603-13620	Phthalo Blue
1603-13700	Oriental Blue
1603-13710	Midnight Blue
1603-13800	Kingfisher
1603-13900	Turquoise Blue
1603-14000	Turquoise Green
1603-14100	Jade Green
1603-14110	Cobalt Green
1603-14120	Fir Green
1603-14130	Spruce Green
1603-14140	Distant Green
1603-14150	Phthalo Green
1603-14200	Juniper Green
1603-14300	Bottle Green
1603-14400	Water Green
1603-14500	Mineral Green
1603-14600	Emerald Green
1603-14700	Grass Green
1603-14800	May Green
1603-14900	Sap Green
1603-15000	Cedar Green
1603-15010	Green Grey
1603-15100	Olive Green
1603-15110	Moss Green
1603-15120	Light Moss
1603-15130	Chartreuse
1603-15140	Green Earth
1603-15150	Parchment
1603-15160	Olive Earth

SKU	COLOUR
1603-15200	Bronze
1603-15300	Sepia
1603-15310	Felt Grey
1603-15400	Burnt Umber
1603-15500	Vandyke Brown
1603-15600	Raw Umber
1603-15700	Brown Ochre
1603-15710	Light Ochre
1603-15720	Yellow Ochre
1603-15800	Raw Sienna
1603-15900	Golden Brown
1603-16000	Burnt Yellow Ochre
1603-16100	Copper Beech
1603-16200	Burnt Sienna
1603-16300	Venetian Red
1603-16400	Terracotta
1603-16410	Sunset Gold
1603-16420	Autumn Leaf
1603-16430	Rust
1603-16440	Light Rust
1603-16450	Mahogany
1603-16460	Burnt Rose
1603-16470	Mars Violet
1603-16480	Taupe
1603-16490	Bistre
1603-16500	Burnt Carmine
1603-16600	Chocolate
1603-16610	Mars Black
1603-16700	Ivory Black
1603-16800	Blue Grey
1603-16900	Gunmetal
1603-16910	Storm Grey
1603-17000	French Grey
1603-17100	Silver Grey
1603-17110	Fell Mist
1603-17200	Chinese White





## Writing Instruments

### Derwent Artist Pencils Tin of 12

There are 120 colours in the range and they are ideal for layering and blending so you can create an infinite spectrum of subtly different hues and tints.

SKU	COLOUR	SIZE
1603-32081	Assorted	Tin of 12



### Derwent Artist Pencils Tin of 24

There are 120 colours in the range and they are ideal for layering and blending so you can create an infinite spectrum of subtly different hues and tints.

SKU	COLOUR	SIZE
1603-32083	Assorted	Tin of 24



### Derwent Artist Pencils Tin of 36

There are 120 colours in the range and they are ideal for layering and blending so you can create an infinite spectrum of subtly different hues and tints.

SKU	COLOUR	SIZE
1603-32085	Assorted	Tin of 36



### Derwent Artist Pencils Tin of 72

There are 120 colours in the range and they are ideal for layering and blending so you can create an infinite spectrum of subtly different hues and tints.

SKU	COLOUR	SIZE
1603-32087	Assorted	Tin of 72



### Chalk - Assorted Coloured

Dust-free formula for cleaner lines.

SKU	SIZE
1603-00218	Box of 100



## Writing Instruments



### Chinagraph Pencil (Lumocolor Permanent Glasochrom)

Waterproof wood-cased pencil in up to 6 colours. For opaque marking on almost all surfaces even on dark or transparent ones, e.g. paper, plastic, metal, glass, wood, leather and stone. No bleeding through paper.

Non-corrosive colour pigments.

Wood from certified, sustainably managed forests.

SKU	COLOUR
CHINA-B	Black
CHINA-BL	Blue
CHINA-G	Green
CHINA-R	Red
CHINA-W	White
CHINA-Y	Yellow

### Artline 170 Permanent Marker - Black

- UV resistance
- This marker can mark on dusty surfaces such as concrete
- It contains a unique dry-safe formula that allows the cap to be left off for up to 2 weeks without the marker drying out (in controlled tests)
- The ink becomes permanent when dry

SKU	COLOUR	SIZE
A170B	Black	2mm Nib



### Artline 47 Wetrite Permanent Marker

It is a great option for anyone who needs to mark information in wet environments. The round barrel makes it easy to grip and use this pen. You can use this marker on wet, non-porous surfaces such as steel and glass. Xylene free.

SKU	COLOUR	SIZE
A47-B	Black	1.5mm Nib



### Dy-mark P20 Reversible Paint Marker Reversible

- Box of 12
- Bullet/Chisel Tip
- High-performance paint marker
- Xylene-free, fast dry formula
- Replaceable, heavy-duty and reversible tips
- Bold, easy-to-read marks

SKU	COLOUR	SIZE
1162-00414	Black	2mm Nib
1162-00416	Blue	2mm Nib
1162-00433	Pink	2mm Nib
1162-00415	Red	2mm Nib
1162-00418	White	2mm Nib
1162-00417	Yellow	2mm Nib





***Perth Main Warehouse***

66 Truganina Rd, Malaga,  
Western Australia 6090  
+61 (0) 8 9209 8500  
perth@westernex.com.au

***Kalgoorlie Warehouse***

18 Kinclaven Way, Broadwood,  
Kalgoorlie, Western Australia 6430  
+61 (0) 8 9091 1152  
kalgoorlie@westernex.com.au

***Brisbane Warehouse***

14 Hasp St, Seventeen Mile Rocks,  
Queensland 4073  
+61 (0) 7 3376 2422  
brisbane@westernex.com.au

***Mt Isa Warehouse***

13 Ryan Rd, (Entry off Davis Rd)  
Mt Isa, Queensland 4825  
+61 (0)7 4743 2122  
mtisa@westernex.com.au

***Orange Warehouse***

72 Astill Drive, Orange,  
NSW, 2800  
+61 (0) 7 3376 2422  
brisbane@westernex.com.au

